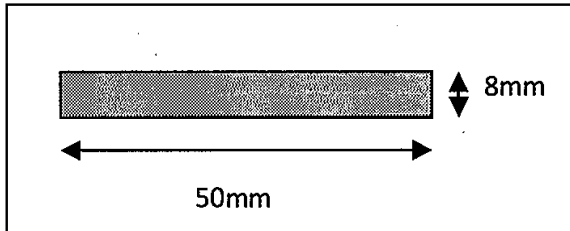




PRODUCT INFORMATION SHEET

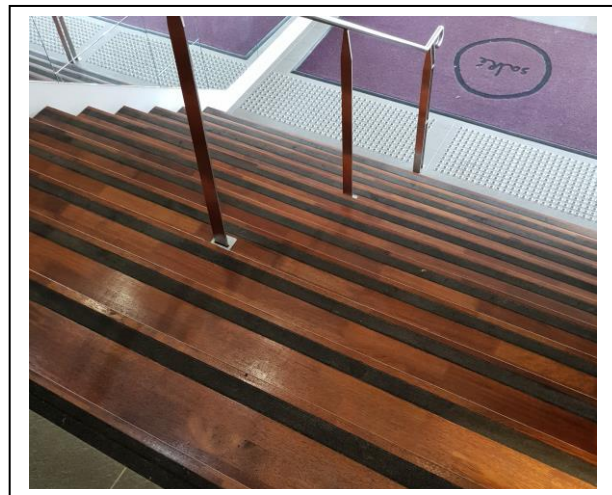
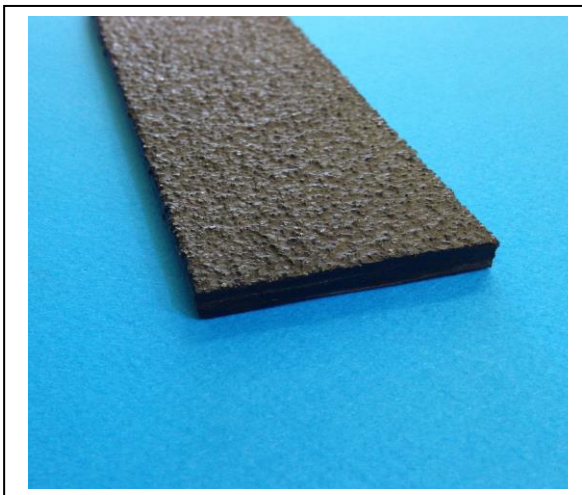
STAIR NOSING – COVER STRIPS – ANTI SLIP TAPE



Staircare SC-R 508 inlay is suitable for installation in pre-grooved timber or concrete stairs. The SC-R 508 inlay can also be used as a lead in edge. SC-R is a composite material with hard wearing silicon carbide anti slip grit. The inlay is 50mm wide x 8mm thick and is available in black. The material is suitable for high exposure to salt water and offers Class P5 Slip Resistance as per AS 4586.2013. SC-R 508 inlays are supplied cut to size in maximum 4 meter lengths. SC-R 508 strip complies with the requirements of AS1428.1:2009 Design for Access and Mobility.

Installation – Grooved Step

The groove in the stair can be set back at a maximum of 15mm from the front edge of the step. The groove should be 52mm wide x 8mm deep. SCR 508 inlay is glued into the groove using a polyurethane based adhesive. (typical glues are: Sikaflex 11FC, Sikaflex 291 Marine Grade, Bostik-Simson ISR 70-05 or any other similar adhesive).



Staircare Australia Pty Ltd 2/84 old Pittwater Road Brookvale NSW 2100

Phone:- 02 9939 3838 Fax:- 02 9939 4497

Email:- info@staircare.com.au website: www.staircare.com.au